
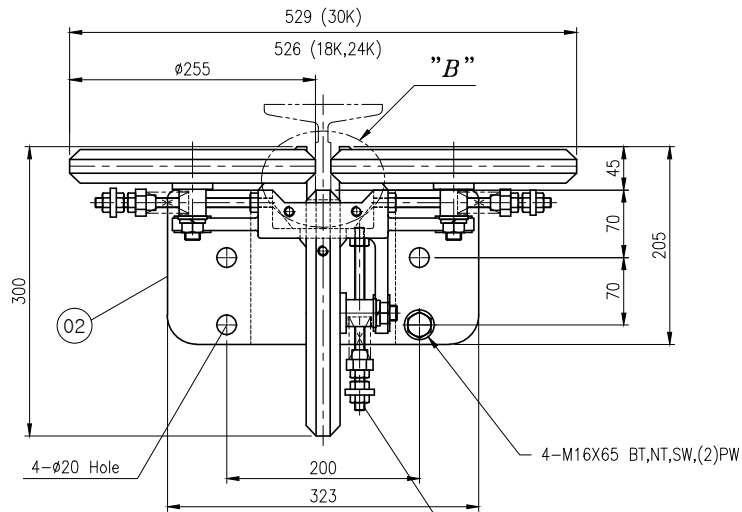


Design Changed	A1	전면 개정 (07.11.23)	B1	P15, SP 변경 (08.10.20)	TYPE	SA255	APPROVED BY	JUNG,M,C	CHECKED BY	JUNG,M,C	 <b>JUNGIL MACHINERY CO.</b>	TITLE <b>GUIDE ROLLER(φ255)</b>	UNIT m/m
	C1	P12 볼트길이가 변경 (19.01.17)	D1	전면 개정 (19.11.21)	SIMILAR DWG.		DESIGNED BY	WOO,D,C	DRAWN BY	WOO,D,C			
					REMARK								

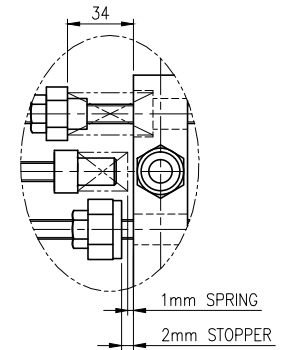
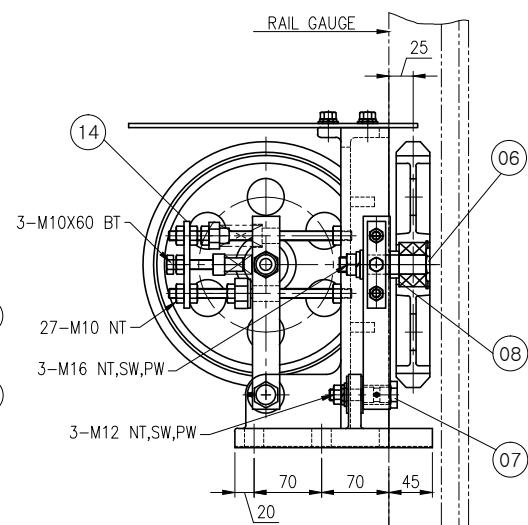
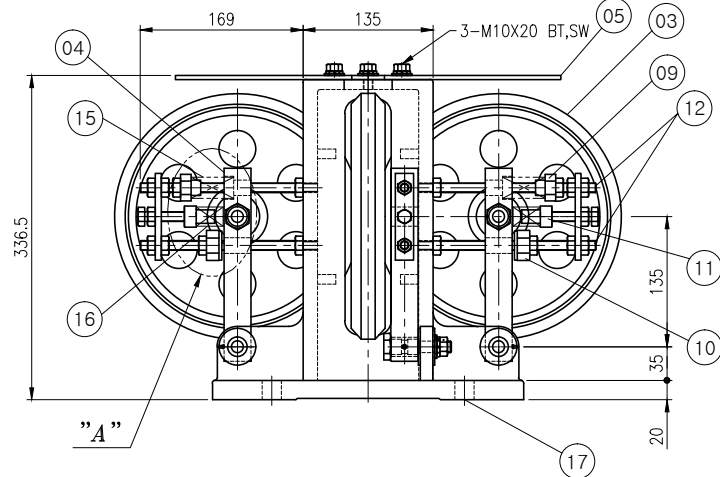
**\* NOTE**

P.NO	RATED SPEED	RATED LOAD	RAIL TYPE	WEIGHT
1	360m/min OR LESS	1800kg OR LESS	18K,24K,30K	31Kg



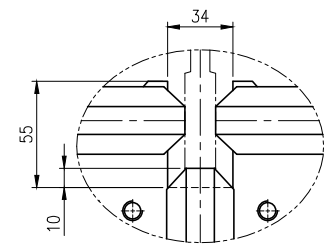
**01 ASS'Y**

Q'TY			P.N	DRAWING. NO	PART NAME	SIZE	MAT'L	W.T
		1	01	JR0082	PO1	GUIDE ROLLER ASS'Y		
		1	02	JR0083	PO1	BASE		
		3	03	JR0084	G01	ROLLER ASS'Y		
		3	04	JR0077	GO1	LEVER ASS'Y		
		1	05	JR0085	PO1	COVER		
		3	06	JR0086	PO1	SHAFT		
		3	07	JR0087	PO1	PIN		
		3	08	JR0088	PO1	COLLAR		
		3	09	JR0037	PO1	SPRING SHOE		
		3	10	JR0063	G03	STOPPER		
		3	11	JR0066	PO1	SPRING SHOE		
		4	12	JR0035	P09	BOLT		
		2	13		P09			
		3	14	JR0080	PO1	PLATE		
		3	15	JR0036	PO1	SPRING		
		3	16	JR0065	PO1			
		10	17	JR0089	P17	SHIM		



**DETAIL "A"**

- 주) 설치 및 조정시 주의사항
- 1) Roller의 Guide Rail에 대한 평행도는 Roller의 직경 내에서 0.3mm 이내가 되도록 Shim을 사용하여 조정할것.  
(단, 카의 전후좌우가 불균형 할때는 30~34mm 범위에서 조정 하여야 한다.)
  - 2) 스프링 압력 조정후 2차 스프링 간격은 1mm 로 하고 스톱퍼의 간격은 2mm로 조정할것.



**DETAIL "B"**

DWG.NO	<b>JR0082</b>	SCALE	A3
		1:5	