


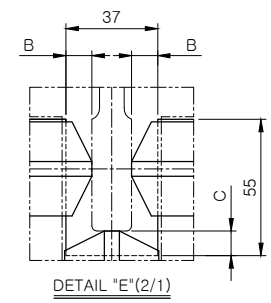
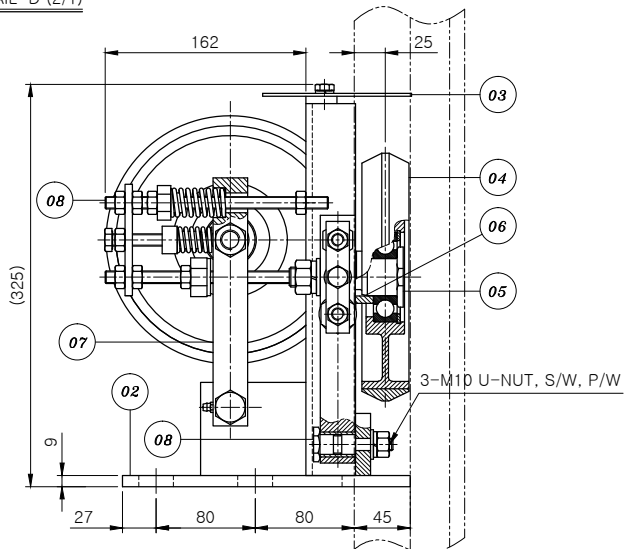
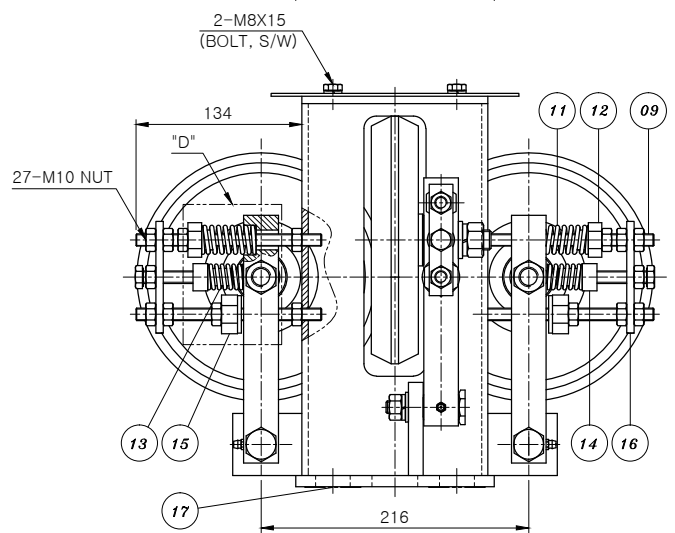
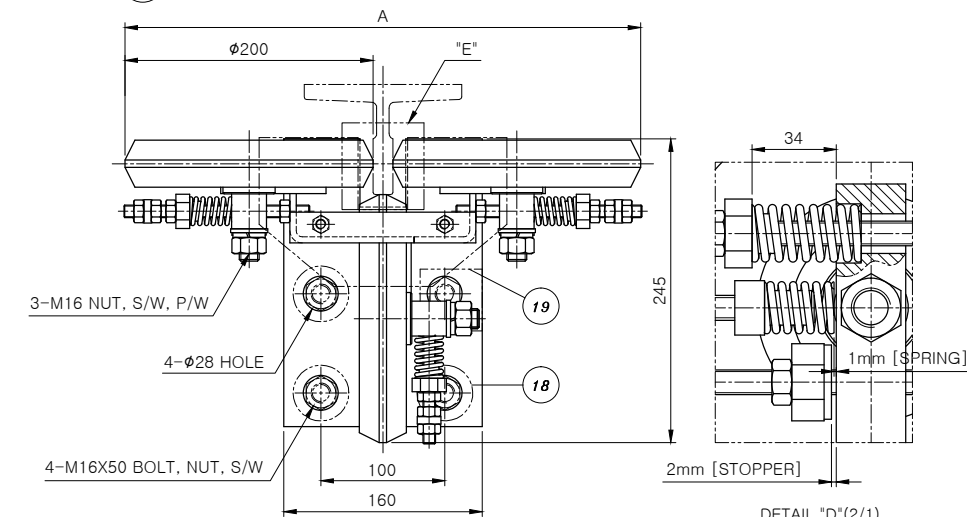
Design Changed	A1	전면개정 (07. 11. 21)	B3	부품공용화 (16. 01. 21)	C1	전면개정 (19. 03. 07)	TYPE	SB200	APPROVED BY	JUNG.M.C	CHECKED BY	JUNG.M.C	 JUNGIL MACHINERY CO.	
	D1	전면개정 (19.11.21)			SIMILAR DWG.			DESIGNED BY	WOO.D.G	DRAWN BY	WOO.D.G	TITLE		GUIDE ROLLER (φ200)
			REMARK					UNIT			m/m	W.T		

P.NO TABLE

P NO	A	B	C	RATED SPEED	RATED LOAD	RAIL TYPE	WEIGHT
01	416	10.5	10	240m/min OR LESS	2500kg OR LESS	18K, 24K	17kg
	419	9				30K	

Q'TY	G2	G1	P.N	DRAWING. NO	PART NAME	SIZE	MAT'L	W.T
			1	01	JR0068	P01	GUIDE ROLLER ASS'Y	
			1	02	JR0069	G01	BASE	
			1	03	JR0073	P01	COVER	
			3	04	JR0055	G01	ROLLER	
			3	05	JR0056	P01	SHAFT	
			3	06	JR0057	P03	SPACER	
			3	07	JR0077	G01	LEVER	
			3	08	JR0079	P01	LEVER SHAFT	
			4	09	JR0035	P05	BOLT	
			2	10		P07		
			3	11	JR0062	P01	SPRING	
			3	12	JR0037	P01	SPRING SHOE	
			3	13	JR0065	P01	SPRING	
			3	14	JR0066	P01	SPRING SHOE	
			3	15	JR0063	G03	STOPPER	
			3	16	JR0080	P01	PLATE	
			10	17	JR0089	P01	SHIM	
			3	18	JR0090	P01	WASHER	
			1	19	JR0008	P01	PLATE	

01 ASS'Y



- 설치 및 조정시 주의 사항
- ROLLER의 GUIDE RAIL에 대한 평행도는 ROLLER의 직경내에서 0,3mm 이내가 되도록 SHIM을 사용하여 조정할것.
 - 설치 후 초기스프링 압력은 34mm로 조정할것.
(단, 카의 전후좌우가 불균형할때는 30~34mm 범위에서 조정)
 - 스프링 압력조정 후 2차 스프링 간격은 1mm로 하고 스토퍼의 간격은 2mm로 조정한다.

DWG.NO	SCALE	A3
JR0068	1 : 4	