

www.ji21.com

엘리베이터 안전장치 제조 전문 기업

 **정일산기**  
JUNGIL



인천광역시 서구 사림로 9번길 2(경서동)

[전화] 032-566-6766

## 제품 소개

### GUIDE ROLLER (고정형)



JR1041

ITEM		Specification	
TYPE		FA78G1	FA78G2
Size	Height Overall	119	119
	Width Overall	166	172
	Depth Overall	135.5	135.5
Roller Wheels	Diameter (mm)	78	
	Width (mm)	25	
	Bearing	#6302	
	Hub	Al-Die Casting	
	Tire	Neoprene	
Base	Material	Steel plate	
Rated Speed	Car (m/min)	-	
	Count Weight (m/min)	120 or Less	
Rated Load	Car (kg)	-	
	Count Weight (kg)	3,500 or Less	
Weight (kg)		2.5	
Rail Type		8k	13k, 18k, 24k

### GUIDE ROLLER (고정형)

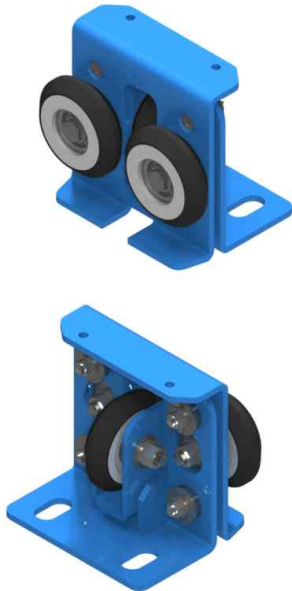


JR1039

ITEM		Specification	
TYPE		FA90G1	FA90G2
Size	Height Overall	116	116
	Width Overall	190	196
	Depth Overall	135.5	135.5
Roller Wheels	Diameter (mm)	90	
	Width (mm)	25	
	Bearing	#6302	
	Hub	Al-Die Casting	
	Tire	Neoprene	
Base	Material	Steel plate	
Rated Speed	Car (m/min)	-	
	Count Weight (m/min)	180 or Less	
Rated Load	Car (kg)	-	
	Count Weight (kg)	3,500 or Less	
Weight (kg)		2.8	
Rail Type		8k	13k, 18k, 24k

제품 소개

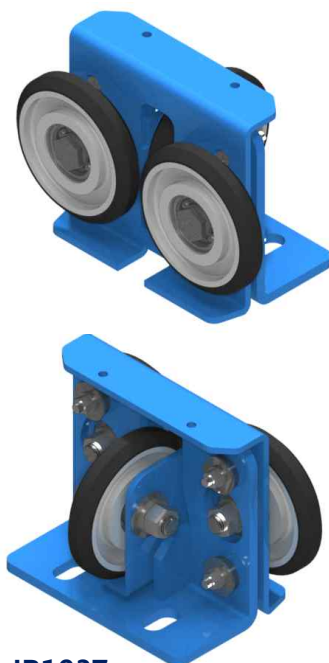
GUIDE ROLLER (방진형) OPTION : COVER



JR1038

ITEM		Specification	
TYPE		RA90G1	RA90G2
Size	Height Overall	148	148
	Width Overall	190	196
	Depth Overall	135.5	135.5
Roller Wheels	Diameter (mm)	90	
	Width (mm)	25	
	Bearing	#6302	
	Hub	Al-Die Casting	
	Tire	Neoprene	
Base	Material	Steel plate	
Rated Speed	Car (m/min)	90 or Less	
	Count Weight (m/min)	-	
Rated Load	Car (kg)	1,150 or Less	
	Count Weight (kg)	-	
Weight (kg)		4.2	
Rail Type		8k	13k, 18k, 24k

GUIDE ROLLER (방진형) OPTION : COVER



JR1037

ITEM		Specification	
TYPE		RA130G1	RA130G2
Size	Height Overall	174	174
	Width Overall	270	276
	Depth Overall	156.5	156.5
Roller Wheels	Diameter (mm)	130	
	Width (mm)	24	
	Bearing	#6304	
	Hub	Al-Die Casting	
	Tire	Neoprene	
Base	Material	Steel plate	
Rated Speed	Car (m/min)	120 or Less	
	Count Weight (m/min)	-	
Rated Load	Car (kg)	1,500 or Less	
	Count Weight (kg)	-	
Weight (kg)		7.3	
Rail Type		8k	13k, 18k, 24k

## 제품 소개

### GUIDE ROLLER (조정형)



JR0091

ITEM		Specification
<b>TYPE</b>		SA150G1
<b>Size</b>	Height Overall	235
	Width Overall	310/316
	Depth Overall	217
<b>Roller Wheels</b>	Diameter (mm)	150
	Width (mm)	24
	Bearing	#6304
	Hub	Al-Die Casting
	Tire	Neoprene
<b>Base</b>	Material	Cast plate
<b>Rated Speed</b>	Car (m/min)	105 or Less
	Count Weight (m/min)	
<b>Rated Load</b>	Car (kg)	1,350 or Less
	Count Weight (kg)	
<b>Weight (kg)</b>		9
<b>Rail Type</b>		8k/13k, 18k, 24k

### GUIDE ROLLER (조정형)



JR0049

ITEM		Specification	
<b>TYPE</b>		SA200G2	SA200G3
<b>Size</b>	Height Overall	321	321
	Width Overall	416/419	416/419
	Depth Overall	246	246
<b>Roller Wheels</b>	Diameter (mm)	200	
	Width (mm)	38	
	Bearing	#6306	
	Hub	Al-Die Casting	
	Tire	Neoprene	
<b>Base</b>	Material	Cast plate	
<b>Rated Speed</b>	Car (m/min)	180 or less	240 or less
	Count Weight (m/min)	-	
<b>Rated Load</b>	Car (kg)	2,500 or Less	
	Count Weight (kg)	-	
<b>Weight (kg)</b>		28	
<b>Rail Type</b>		18k, 24k/30k	

## 제품 소개

### GUIDE ROLLER (조정형)



JR0068

ITEM		Specification
TYPE		SB200G1
Size	Height Overall	325
	Width Overall	416/419
	Depth Overall	245
Roller Wheels	Diameter (mm)	200
	Width (mm)	38
	Bearing	#6306
	Hub	Al-Die Casting
	Tire	Neoprene
Base	Material	Steel plate
Rated Speed	Car (m/min)	240 or Less
	Count Weight (m/min)	360 or Less
Rated Load	Car (kg)	2,500 or Less
	Count Weight (kg)	1,800 or Less
Weight (kg)		17
Rail Type		18k, 24k/30k

### GUIDE ROLLER (조정형)



JR1010

ITEM		Specification
TYPE		SC200G1
Size	Height Overall	380
	Width Overall	416
	Depth Overall	231
Roller Wheels	Diameter (mm)	200
	Width (mm)	38
	Bearing	#6306
	Hub	Al-Die Casting
	Tire	Neoprene
Base	Material	Cast plate
Rated Speed	Car (m/min)	180 or Less
	Count Weight (m/min)	
Rated Load	Car (kg)	2,500 or Less
	Count Weight (kg)	
Weight (kg)		
Rail Type		13k

## 제품 소개

### GUIDE ROLLER (조정형)



JR0149

ITEM		Specification
TYPE		SD200G1
Size	Height Overall	354
	Width Overall	416
	Depth Overall	232
Roller Wheels	Diameter (mm)	200
	Width (mm)	38
	Bearing	#6306
	Hub	Al-Die Casting
	Tire	Neoprene
Base	Material	Steel plate
Rated Speed	Car (m/min)	180 or Less
	Count Weight (m/min)	
Rated Load	Car (kg)	2,500 or Less
	Count Weight (kg)	
Weight (kg)		16
Rail Type		13k

### GUIDE ROLLER (조정형)



JR0082

ITEM		Specification
TYPE		SA255G1
Size	Height Overall	337
	Width Overall	526/529
	Depth Overall	300
Roller Wheels	Diameter (mm)	255
	Width (mm)	35
	Bearing	#6204x2
	Hub	Al-Die Casting
	Tire	Neoprene
Base	Material	Cast plate
Rated Speed	Car (m/min)	360 or Less
	Count Weight (m/min)	-
Rated Load	Car (kg)	1,800 or Less
	Count Weight (kg)	-
Weight (kg)		31
Rail Type		18k, 24k/30k

메 모





인천광역시 서구 사림로 9번길 2 [경서동]

TEL. 032-566-6766

E-mail. [jimc@korea.com](mailto:jimc@korea.com)

Fax. 032-566-6763

Web. [www.ji21.com](http://www.ji21.com)