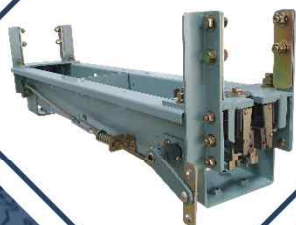


www.ji21.com

엘리베이터 안전장치 제조 전문 기업



정일산기

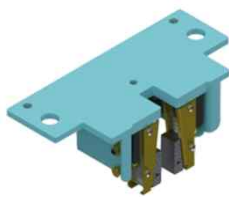


인천광역시 서구 사림로 9번길 2(경서동)

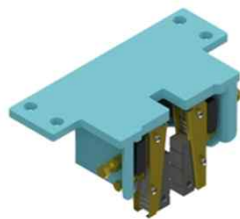
[전화] 032-566-6766

제품 소개

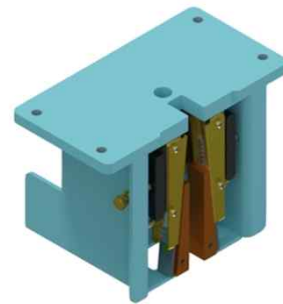
SAFETY GEAR SERIES (MAX. LOAD 2.8~5 ton)



PSI-2

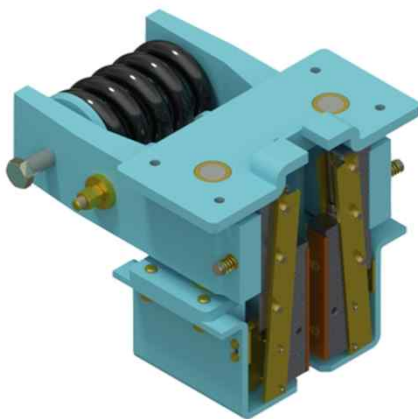


PSG-3

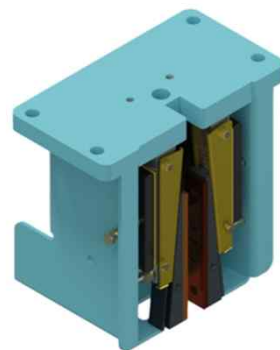


PSD-5

SAFETY GEAR SERIES (MAX. LOAD 7~7.1 ton)



PSC-7



PSH-7

제품 소개

SAFETY GEAR (PSI-2)



PSI-2

ITEM	Specification	
Type	Progressive	
Model	PSI-2	
RATED SPEED (m/min (m/sec))	120 (2) or Less	
MIN. LOAD (kg)	800	
MAX. LOAD (kg)	2,800	
Guide Rail	Oiled	Dry

SAFETY GEAR (PSG-3)



PSG-3

ITEM	Specification	
Type	Progressive	
Model	PSG-3	
RATED SPEED (m/min (m/sec))	150 (2.5) or Less	
MIN. LOAD (kg)	950	
MAX. LOAD (kg)	3,700	
Guide Rail	Oiled	Dry

제품 소개

SAFETY GEAR (PSD-5)



PSD-5

ITEM	Specification	
Type	Progressive	
Model	PSD-5	
RATED SPEED (m/min (m/sec))	150 (2.5) or Less	210 (3.5) or Less
MIN. LOAD (kg)	2,000	
MAX. LOAD (kg)	5,000	
Guide Rail	Oiled	Dry

SAFETY GEAR (PSC-7)

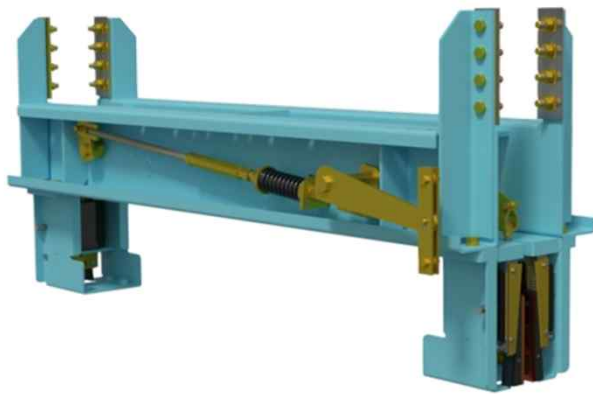


PSC-7

ITEM	Specification	
Type	Progressive	
Model	PSC-7	
RATED SPEED (m/min (m/sec))	360 (6) or Less	
MIN. LOAD (kg)	2,750	
MAX. LOAD (kg)	7,000	
Guide Rail	Dry	

제품 소개

SAFETY GEAR (PSH-7)



PSH-7

ITEM	Specification	
Type	Progressive	
Model	PSH-7	
RATED SPEED (m/min (m/sec))	150 (2.5) or Less	240 (4) or Less
MIN. LOAD (kg)	3,000	
MAX. LOAD (kg)	7,100	
Guide Rail	Oiled	Dry

메 모





인천광역시 서구 사림로 9번길 2 [경서동]

TEL. 032-566-6766

E-mail. jimc@korea.com

Fax. 032-566-6763

Web. www.ji21.com